

# GENERAL FUNCTIONS OF THE DIVISION WATER ENVIRONMENT

## 1. MANDATE

To ensure protection and sustainable use of the water resources through the provision of Sections 21, 22 and 110 of the Water Act 54 of 1956 and Sections 37, 41, 68-84, and 101-103 of the Water Resources Management Act 11 of 2013

### Divisional functions

- to **develop** water quality guidelines or standards and regulations
- to **ensure** compliance to **standards** and regulations by water users and sanitation services providers
- to **monitor and investigate** water resources quality and pollution of surface, groundwater
- to **guide and advice** on operation and maintenance of water treatment systems and safe disposal/reuse of effluent
- to **monitor** river health through research, monitoring program
- to monitor and **control** the proliferation of aquatic weeds
- to **conduct** environmental education and awareness
- to **implement and promote** the integrated water resources management (IWRM) plan, both nationally and internationally.
- to **coordinate** water conservation and demand management
- to **develop and manage** the Water Quality Information System database (WAQIS)

## 2. MISSION

The division manages, monitor and control the quality and quantity of water in all national water bodies in order to maintain and enhance current water quality values by preventing pollution or degradation of the aquatic and wetland environment.

### **3. VISION**

A national water environment that is efficiently managed so as to ensure high quality water and wetland resources are available for the sustained use of present and future Namibians".

### **4. OPERATIONAL OBJECTIVES**

- To develop national policies and legislation for managing our scarce natural water resources.
- To monitor and manage Namibia's water and wetland resources in an integrated manner
- To improve the efficient and sustainable use of water resources
- To ensure that Namibia complies with international and regional principles, protocols, conventions and agreements on international watercourses
- To develop human resources and institutional capacity

#### **4.1 DIVISIONAL OUTPUTS**

- Set-up a water quality monitoring program
- Effluent that complies to set standards
- Improved knowledge of water quality and resources management
- Regulations of solid waste management
- Wetlands related databases, reports and wetland resources publications
- Knowledgeable staff in IWRM

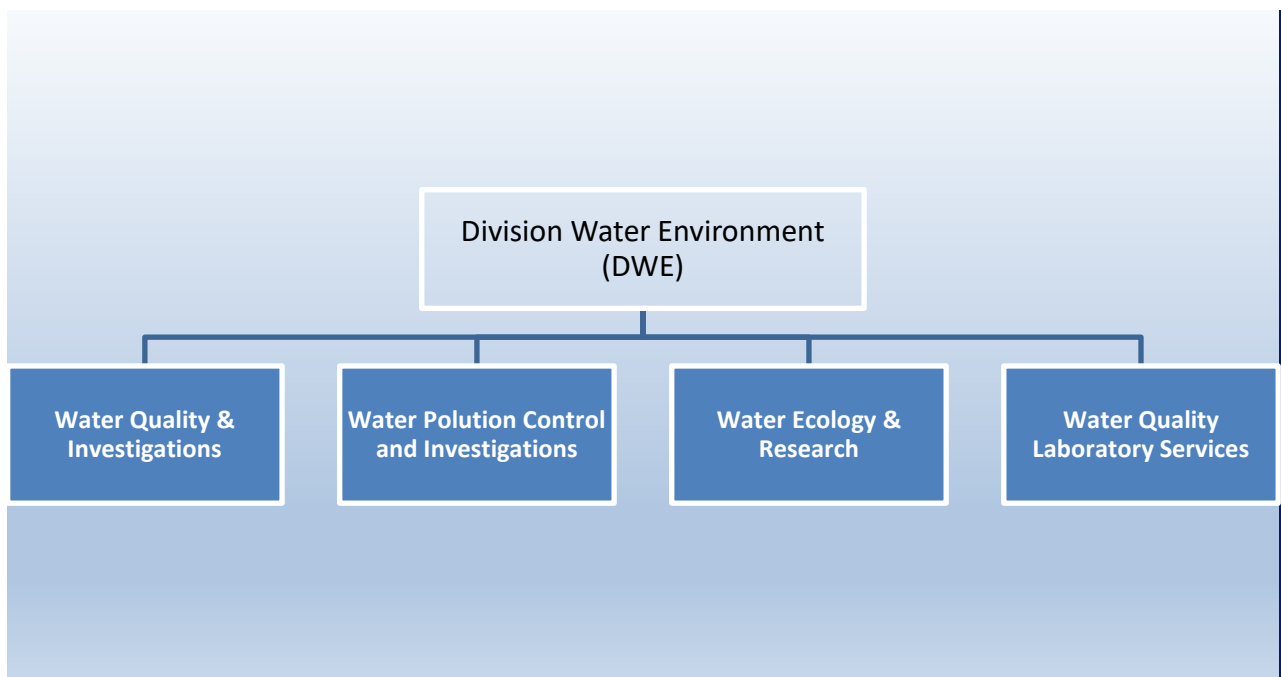
#### **4.2 DIVISIONAL INDICATORS**

- Compliance with effluent quality and wastewater discharge permit conditions
- Number of waterborne disease cases reported,
- Solid waste management plans and available regulations
- 50% of people aware of water management issues
- Concentration of cyanide in the water within the guidelines limits
- Stable productivity of selected wetland natural resources products.

- The percentage of Basin Management Committees using wetland resource data in their management plans.
- Number of identified polluted sites where pollution is stopped/reversed Quality of water in the perennial and ephemeral rivers

## 5. THE DIVISIONAL OPERATIONAL STRUCTURE

The divisional operational structure consists of four (4) sections and the respective functions are presented in the following paragraphs.



### 5.1 WATER QUALITY AND INVESTIGATIONS

- ensure end-consumers are supplied with good quality water (Class A-B) in the Water Act 54 of 1956 as Amended Act 22 of 1985 and “Acceptable Standards” in the Water Resources Management Act, Act 11 of 2013
- assess the Water Service Providers compliance to the WQS evaluate the treatment process efficiency

**The Section is responsible for enforcement on the:**

- ❖ Regulation for Drinking Water Quality and Supply
- ❖ Operational Guideline for Drinking Water Purification Plants

- ❖ National Water Quality Monitoring Program
- ❖ Water Quality Guidelines/Standard for Potable Water
- ❖ Application for Registration and Deregistration of Waterworks and Operating Personnel
- ❖ Technical requirements for the licensing of privately owned laboratories established for water testing

## 5.2 WATER POLLUTION CONTROL AND INVESTIGATIONS

- To prevent water pollution by strengthening the Polluter Pays and Duty Care principles
- To monitor and control wastewater disposal sites/effluent discharges with respect to compliance
- To give technical advice on new/renewal of permit applications, discharge of effluent, effluent treatment facilities and disposal sites
- To collect Namibian data related to wastewater, waste and water quality and share information related to waste discharge in shared water courses.
- To protect surface and groundwater from pollution
- To carry out water management practices with limitation on the discharge of effluent and improve water saving technologies

### **The Section is responsible for enforcement of the:**

- Regulation for Pollution Control
- Application For Wastewater Purification And Effluent Discharge
- Water Quality Standard For Effluent

### **Code of Practices for:**

- Septic Tanks
- Oxidation Ponds
- Biological Filtration
- Activated Sludge

### **Guidelines**

- Wastewater Re-use

- Disposal of Solids from Water and Wastewater Treatment Processes

### 5.3 WATER ECOLOGY AND RESEARCH

- Regulating prevention of the degradation of wetlands resources, riparian zones, control of aquatic invasive species
- Monitoring and researching the wetland resources.
- Planning, coordinating and undertaking fieldwork for aquatic ecology investigations.
- Conducting bio-monitoring investigations on wetlands using South African Scoring System (SASS) and Namibian Scoring System (NASS) and MiniSASS.
- Collecting, processing and assessing aquatic ecological data.
- Developing wetlands and water awareness resource materials.
- Creating awareness on wetlands and water resources.
- Investigating aspects of biodiversity and environmental water requirements of perennial rivers, ephemeral rivers, and other wetlands in Namibia
- Providing aquatic ecosystem information and expertise to support; water resources management, new policies and legislation, environmental assessments.

**The Section is responsible for enforcement on the:**

- Control of use of wetland resources
- Control of aquatic invasive species
- Protection of riparian zones
- Corresponding applications to the regulations are under development

### 5.4 WATER QUALITY LABORATORY SERVICES (WQLS)

- performing all water related physical, chemical and micro/macro biological analyses on Potable Water and Wastewater
- provide risk-based monitoring of drinking water supplies countrywide.
- ensure that Wastewater/Effluent disposed into the environment meets the required standards
- analyses for emergency water quality issues

- quality control and assurance of analyses performed by water services providers and private laboratories
- water sampling training for samplers

**Contact Details:**

Ms. Cynthia Ortmann

DEPUTY DIRECTOR: Division Water Environment

Tel: 061 2087169

Fax: 061 2087160

Cell: +264811435585

E-mail: [Cynthia.Ortmann@mawlr.gov.na](mailto:Cynthia.Ortmann@mawlr.gov.na)